



INJECTION SYSTEMS



INSTALLATION AND OPERATING GUIDE

Model: EZ 1010HB

High Pressure Garden Hose & Drip Feeder
1 Gallon Liquid / 8 LB Dry Capacity

CAUTION: Installing your system improperly can cause risk of water contamination and pose health risks. Do not attach your feeder to a hose bib or sprinkler line that does not have a hose vacuum breaker (pictured), anti-siphon device, or back flow preventer. Back flow preventer is not included with system.

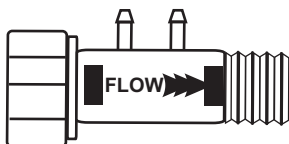
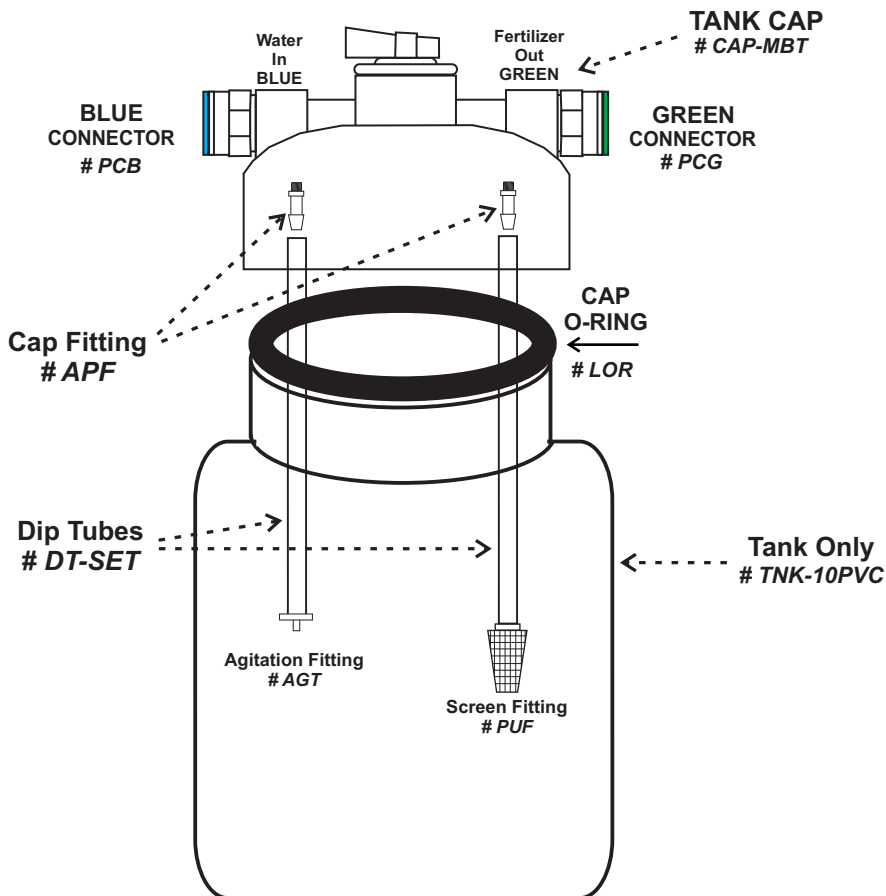
Do not install system into an irrigation main line before a zone valve. Do not install if pressure exceeds 80 PSI. Flush hose after each use to vent chemicals and pressure. Empty tank when freezing conditions are present.

For additional information, how to videos, or to contact EZ-FLO go to our website:

www.ezflorfertilizing.com

GARDEN HOSE & DRIP CONNECTION TANK ASSEMBLY & PARTS LIST

Replacement Parts available through EZ-FLO distributors



1 - Hose Bib Connector
3060-CG

5 - Feet 1/4" Clear Tubing
CT5



Hose Vacuum Breaker
(Not Included)



2 - Tubing Valves
TVLV

*Tubing Valves normally drip
when under pressure.*

5 - Feet 1/4" Black Tubing
BT5



Flo Disc Set
K-INSKFD

Flow Requirements: Low Flow Hose & Drip Systems

Drip systems with less than 120 gallons per hour (GPH) water flow may require an EZ-FLO *Flo-Disc* in order to inject solution into the drip system. There are three discs provided for these conditions.

Note: The Flo-Disc is not intended for pressure reduction and cannot be used for this purpose. The Flo-Disc will create additional bypass through the tank when necessary to speed up injection.

Important: You must have colored fertilizer in the EZ-FLO tank or food dye to adjust the system. Let the system run for a few minutes to make sure the fertilizer is not flowing before installing or changing the Flo-Disc. If there is not color in the clear tube, the system is not flowing and a more restrictive Flo-Disc is required for operation.

White Flo-Disc	120 to 60 gph
Black Flo-Disc	60 to 30 gph
Red Flo-Disc	30 to 7.5 gph

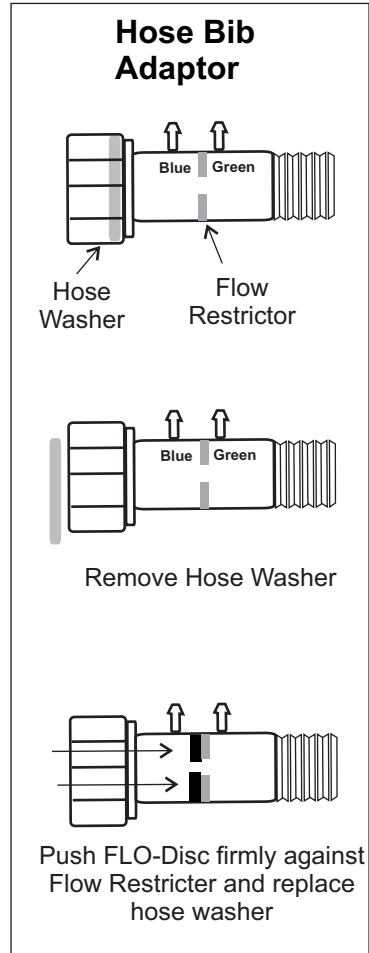
When using a Flo-Disc, pre-dilute products 3 parts water with 1 part product (25% Strength).

Step 1. Estimate your water flow by multiplying the number of drip emitters on your system by their gallons per hour flow rating. (If you do not know your water flow you can use trial & error starting without a Flo-Disc. If no color is present in the clear tube insert a Flo-disc starting with the white)

Step 2. Remove the washer from the swivel nut on the hose bib adaptor. For easy removal, use pliers to grab the O-Ring tab or a plain end screw driver.

Step 3. Push the proper *Flo-Disc* into the hose bib adaptor until it presses firmly against the flow restrictor in the center of the hose bib adaptor. The water flow will hold the disc in place.

Step 4. Replace the hose bib adaptor hose washer and follow steps 2 through 4 in the "**Installing your EZ-FLO**" in these instructions.



Installing your EZ-FLO: Garden Hose & Drip Systems

Setting up your EZ-FLO is “EZ” just follow the simple steps below:

Step 1: Determine the type of installation that is correct for your system (hose or drip) and insert the correct FLO disc if necessary (see “**Flow Requirements Section**”)

Step 2: Install the **EZ-FLO** hose bib adapter in the correct position as shown in the illustrations.

Step 3: Attach tubing to the hose bib adapter fitting. Slide the Black tubing over the barb next to the blue mark carefully to avoid stressing the fitting. Repeat with the Clear tubing next to the Green mark.

Step 4: Attach tubing to the white tank cap. **Do not remove the fittings.** To install press the tubing into the hole until it stops. Light pressure is required, do not stress the fittings.

Additional Installation Notes:

If one is not already installed a hose vacuum breaker must be installed to use an **EZ-FLO** system per local plumbing codes (**not Included**) Back flow prevention may not be required on well irrigation systems but is still recommended.

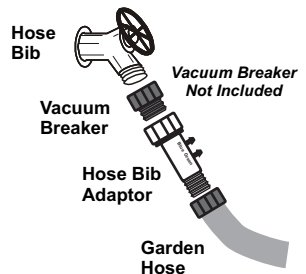
When possible the hose bib adapter fitting should always be the last component installed in any configuration. Timers, filters, & pressure regulators should not be installed after the hose bib adapter.

The included tubing shut off valves may be used to shut off the unit. These can be installed in the clear and black tubing at any point. Tubing valves normally drip under pressure, this will not affect the operation of the EZ-FLO.

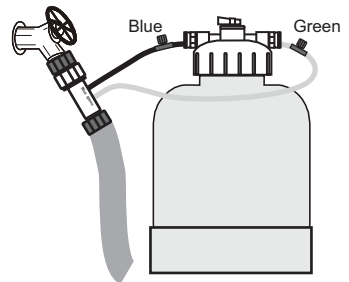
Unit includes 5 ft of clear and 5 ft of black tubing, you may trim tubing to necessary length.

Note: A Timer May Be Installed Before Or After The Ez-flo Hose Bib Connector (1010HB Only)

Garden Hose

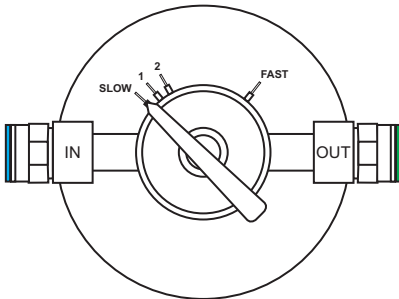


Completed Installation

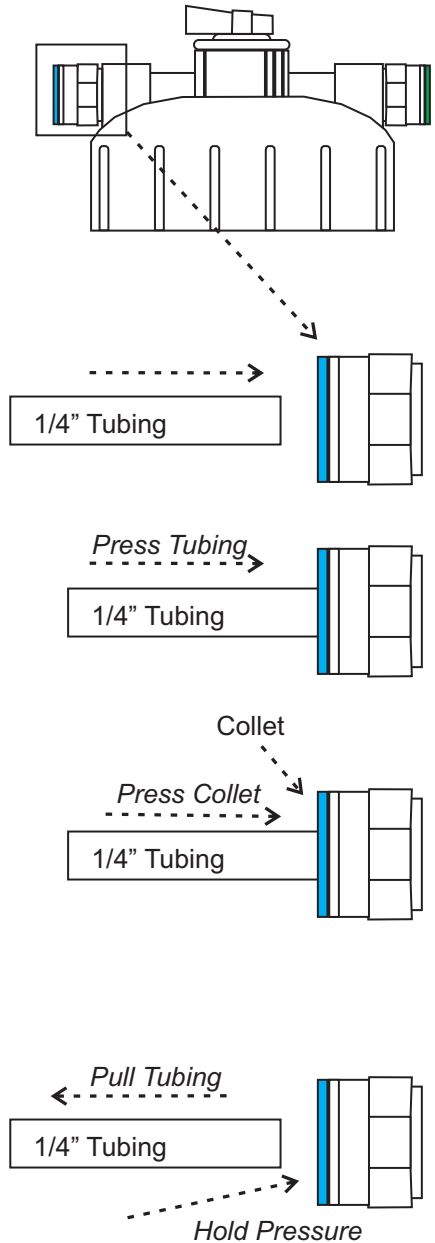


CAP Tubing Fittings: Insert & Release

Top View



Side View



The EZ-FLO system uses push connect fittings to connect the clear and black 1/4" tubing to the cap.

To Insert:

Step 1. Insert the end of the tubing into the appropriate side (Clear to Green / Black to Blue) by pressing into the hole. Press gently until the tubing stops.

Step 2. Gently tug the tubing to insure it is locked into place.

To Remove:

Step 1. Shut off pressure to the system.

Step 2. Apply gentle pressure to the Green or Blue collet with your fingers.

Step 3. While holding pressure, gently pull the tubing away from the fitting to release.

Note: Make sure to direct the fitting away from your face and body. A small amount of residual pressure may be in the tank and cause a momentary release of fluid.

Adding Fertilizer & Feeding Settings

MAX CAPACITY:
8 Lb Dry Powder
1 Gallon Liquid



Step 1. Add the fully concentrated product and select the appropriate cap setting based on the manufacturers recommended coverage rate. **Products do not require dilution or premixing unless using a Flo-Disc or the manufacturer's recommendation**

Typical Coverage Rates:

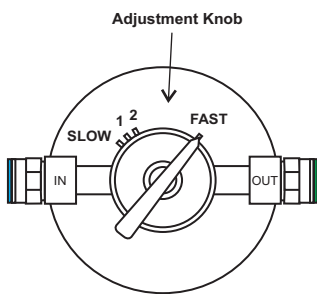
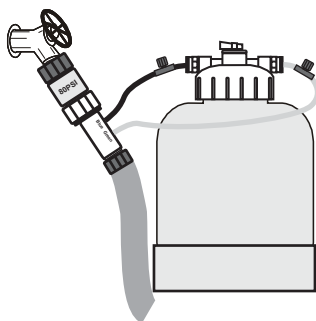
Water Soluble Products - 1 lb per 1000 sqft
 Liquid Products - 2 cups per 1000 sqft

EZ-FLO does not provide application recommendations for products not listed in the EZ-FLO catalog or EZ-FLO website

Step 2. Fill the tank with water until all air is out of the tank. The system will mix the products automatically when the water is turned on.

Step 3. Screw tank cap on the tank and connect tubing to the cap and hose bib adaptor. Connect blue to blue and green to green. The tubing slides over the connectors on the hose bib adaptor and into the connector on the cap.

Step 4. Set the flow adjustment on the cap to fast feed for quick feeding and to slow feed to feed slowly every time you water. You can also feed at these approximate rates (rates will vary due to product variations)



PROPORTIONING CAP

Slow	1000:1	2/3 tsp. per gallon
#1	500:1	1 1/3 tsp. per gallon
#2	250:1	1 Tbsp. per gallon
Fast	100:1	2 Tbsp per gallon

To refill - shut off pressure to tank, remove tubing from the cap, pour the water out of the tank and go to step one above.

Advanced Feeding Guide

The chart below is intended to be used for a reference to assist in calibrating your EZ-FLO system to other manufacturers products. This chart along with additional information and video may be found on our website: www.ezflofertilizing.com

Using the Chart:

The gallons to empty at a given setting indicates the total water that will be mixed with your concentrated product before the contents are completely used. If you need to figure ounce per gallon or tablespoons, you would reference the "Gallons to Empty" section of the chart.

Example: Fertilizer bag wants you to apply 1 tablespoon of product per gallon of water and you want to apply quickly. If you use the fast setting, it will take 100 gallons to empty the tank. You then need to add 100 tablespoons to the tank, top off with water, and use the fast setting until the color runs out.

The same example above, but with a flo disc installed, on the fast setting the tank would run out in 25 gallons of water. To get 1 tablespoon per gallon, you would need to add 25 tablespoons to the tank and top off with water.

EZ 1010-HB

No Flo-Disc / Standard Hose Bib

Feed Rate	Ratio	Tank Capacity	Gallons to Empty
Slow	1000 to 1	1 gal	$1000 \times 1 = 1000$
#1	500 to 1	1 gal	$500 \times 1 = 500$
#2	250 to 1	1 gal	$250 \times 1 = 250$
Fast	100 to 1	1 gal	$100 \times 1 = 100$

With Any Color Flo-Disc

Feed Rate	Ratio	Tank Capacity	Gallons to Empty
Slow	250 to 1	1 gal	$250 \times 1 = 250$
#1	125 to 1	1 gal	$125 \times 1 = 125$
#2	62.5 to 1	1 gal	$62.5 \times 1 = 62.50$
Fast	25 to 1	1 gal	$25 \times 1 = 25$

Notes: All feed rates are approximate and not guaranteed by EZ-FLO due to the high amount of variables resulting from differences in irrigation system configuration, product quality, viscosity, and specific gravity. Feed rates and ratios are provided for convenience only. EZ-FLO feeders should be used for general application of liquid and water soluble products only and are not marketed as a direct replacement for chemical siphon feeders.

For safe fertilizing practices EZ-FLO recommends the plants be fed at half or 50% of the manufacturers recommended amount for the first application to prevent any damage to the plants or landscape.

EZ-FLO FREQUENTLY ASKED QUESTIONS

WHAT PRODUCTS CAN I USE WITH THE SYSTEM?

Any liquid or water soluble powder may be used in the system. Water soluble powders do not need to be dissolved to work in the system. The **EZ-FLO** process dissolves, mixes, and measures for you. If your product is clear you must add food coloring or dye so the product will be visible in the clear output tube.

HOW DO I KNOW WHEN THE FERTILIZER IS GONE?

When the system is operating (water flowing) the clear tube will fill with the color of your fertilizer. When the systems is operating and the tube is running clear, the system is out of fertilizer.

MY FERTILIZER IS GONE BUT THE TANK IS FULL OF WATER

The **EZ-FLO** system will always be full of fluid since it replaces the product with fresh water utilizing a patented process to layer the incoming water over the heavier fertilizer solution. This process is similar to oil on water or whipped cream on gelatin.

HOW DO I KNOW THE SYSTEM IS WORKING?

When water is flowing through your garden hose or drip system, the color from the fertilizer will completely fill the clear tube. The color depends on the fertilizer or dye color. The color in the tube may be lighter or darker depending on how much fertilizer was put into the tank and/or the injection setting selected on the cap. If you have a full tank of fertilizer and do not see color in the clear tube, refer to the **Installation** and **Flow Requirements** sections of this guide.

MY SYSTEM IS RUNNING BUT THE LINE IS STILL CLEAR

- First check that your system has water flowing and is not just under pressure. The tube will only show color when the water is flowing.
- Make sure the tank was filled with the proper amount of fertilizer and dye was added if the fertilizer did not contain a dye. Also, confirm all air was removed from the tank by topping off with water.
- Check that the included hose bib injection fitting is installed according to the **Installation** section. You may need to rearrange your filter, pressure regulator, and/or timer so our injector fitting is last.
- Check the **Flow Requirements** section to determine if you need a **Flo Disc** or that the correct **Flo Disc** was selected.
- If installed in a sprinkler line adjust the ball valve connector (CBV) according to the instructions provided with the connector. If the system was installed in a sprinkler line and a coupling ball valve (CBV) connection was not used, one must be installed for proper function.

MY SYSTEM IS FEEDING TOO FAST

Check that you have selected the appropriate feed setting. Also, if you used a Flo Disc during installation, make sure the proper disc was selected. Any Flo-Disc will speed up the injection rate of the system.

If using a coupling ball valve connection (CBV) for irrigation pipe, make sure the valve is properly calibrated. Opening the valve will slow the feed rate for your system.

***For additional information and How To videos, visit us on the web:
www.ezflofertilizing.com***