

BLAZING™ TwiztLOC

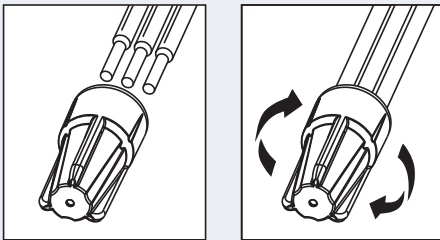
Corrosion Resistant Low Voltage Connectors



INSTALLATION INSTRUCTIONS

IMPORTANT: Turn off power before installing or removing connector. Product to be used in accordance with local and national codes.

1. Strip wires 1/2" (12.7mm) and align frayed strands and conductors. Pre-twisting of wires unnecessary.
2. Hold stripped wire ends evenly together. Lead stranded wire(s) beyond solid wire ends by approximately 1/16" (1.6mm).
3. Firmly hold wire combination together and insert it through the center of the cap on the end of the connector.
4. Continue to push and twist (clockwise) until hand tight – 1 to 2 wire wraps should be visible. Do not over torque.
5. Wipe any excess silicone in and around the wires. Do not reuse.



Selected 30V Wire Combinations
For use with solid and/or stranded combinations.

2-5 #18	2 #14 w/1 #18	3 #16
2 #12 w/1 #18	2 #14 w/1 #16	
2 #12 w/1 #16	3 #14	
3 #12	2 #16 w/1 #18	

Contact factory for a complete list of wire combinations at 800.633.0232.

Blazing™ TwiztLoc TLC20 Gray/Yellow

SKU #	Selling Unit
TLC20	Bottle of 100
TLC20-15	Bag of 15

PRODUCT SPECIFICATIONS & MEASUREMENTS

Max. Voltage: 30V max. building wire, 10AMPS
 Connector Size: 1.5" x .675"
 Wire Type: Copper/Copper
 Wire Range: Min #18/Max #12
 Temperature Rating: 90°C (194°F)
 Silicone Sealant Temperature: -40°F to 400°F

Measurements (Inches):

A - 1.44
 B - 0.675
 C - 0.487

