

ACE

CONNECTOR™

Low Voltage Direct Bury Lug



Installation Instructions:

IMPORTANT: Turn off power before installing or removing connector. Product to be used in accordance with local and national codes.

1. Prior to stripping wire, slide heat shrink onto wire.
2. Strip wires 5/8" (15.9mm).
3. Align any frayed strands or conductors.
4. Place stripped wire(s) into end(s) of lug.
5. Tighten set screw with Hex Key. Do not over torque.
6. Position heat shrink on lug. Heat evenly with heat gun or hand held torch until sealed. Do not reuse.



ACE Connector™ Low Voltage Direct Bury Lug

Catalog #	Selling Unit
90330	Box of 50
90335	Box of 25 2 pc bags

PRODUCT SPECIFICATIONS AND MEASUREMENTS

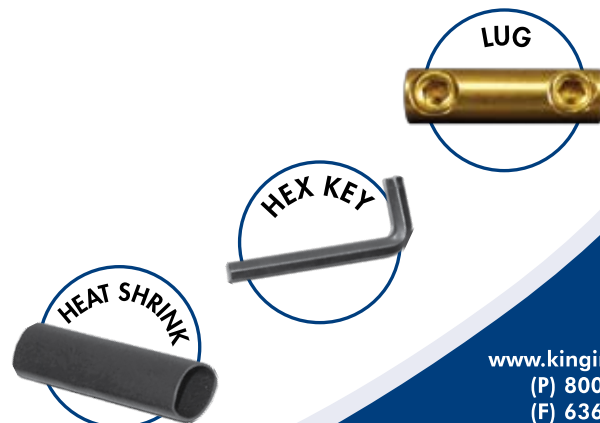
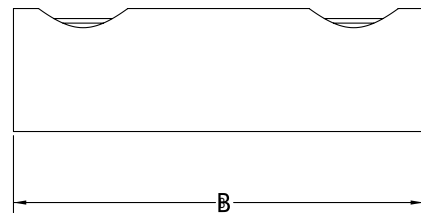
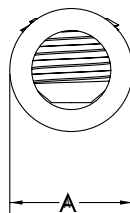
Max. Voltage: 30V
 Max. Amperage: 25A
 Connector Size: 0.38" x 1.25"
 Wire Type: Copper
 Wire Range: Min #18/Max #8 Solid and Stranded

CONSTRUCTION

Lug: Brass
 Set Screw: Brass
 Heat Shrink: Polyolefin with adhesive liner

MEASUREMENTS

A - 0.38" B - 1.25"
 A - 9.53mm B - 31.75mm



ACE Connector™ Low Voltage Direct Bury Lug

FEATURES AND BENEFITS

The ACE Connector is our brass screw-tight lug that creates a solid mechanical connection. The ACE Connector also features a 25% longer heat shrink tube that helps the entire connection resist water intrusion. This fast curing heat shrink makes it easy to get weather resistant wire connections. The ACE Connector is ideally suited for low voltage landscape lighting applications where performance and clean looks are important.

- Solid brass lug
- Fast curing heat shrink
- Weather resistant to withstand outdoor elements
- For use in low voltage landscape lighting and direct bury applications
- Set screw thread pitch allows tighter securing of wires

